

F6 Firmware Update Guide

• Zoom Corporation does not bear liability for any damages or third-party claims arising from the use of the software, whether directly or indirectly. Unauthorized redistribution, sale, leasing, renting, alteration, or reverse engineering of the software is prohibited. Features and specifications of the software and the contents of the documentation may be changed in future without notice.

Copyright(C) 2021 ZOOM Corporation. All Rights Reserved.

Copying or reprinting this manual in part or in whole without permission is prohibited.

Windows® is a registered trademark of Microsoft® Corporation.

Mac® is a trademark or registered trademark of Apple Inc.

Note: All trademarks and registered trademarks in this document are for identification purposes only and are not intended to infringe on the copyrights of their respective owners.

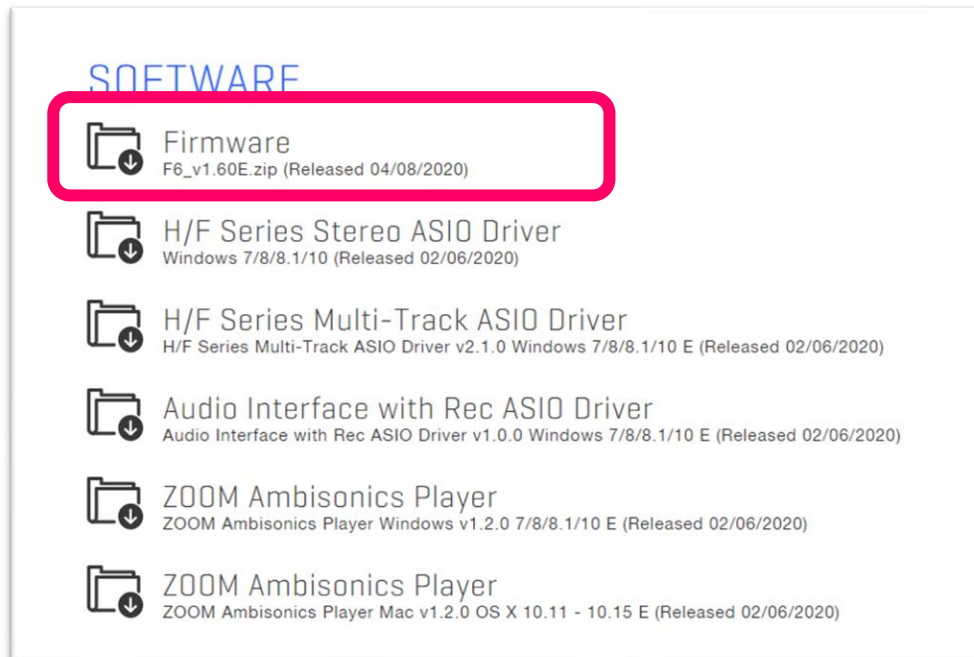
Proper display is not possible on grayscale devices.

The illustrations in these instructions might differ from actual screens.

This guide explains firmware update to Ver. 1.60 as an example.

Installing the firmware update file

Download the ZIP file containing the firmware update file from F6 download page.

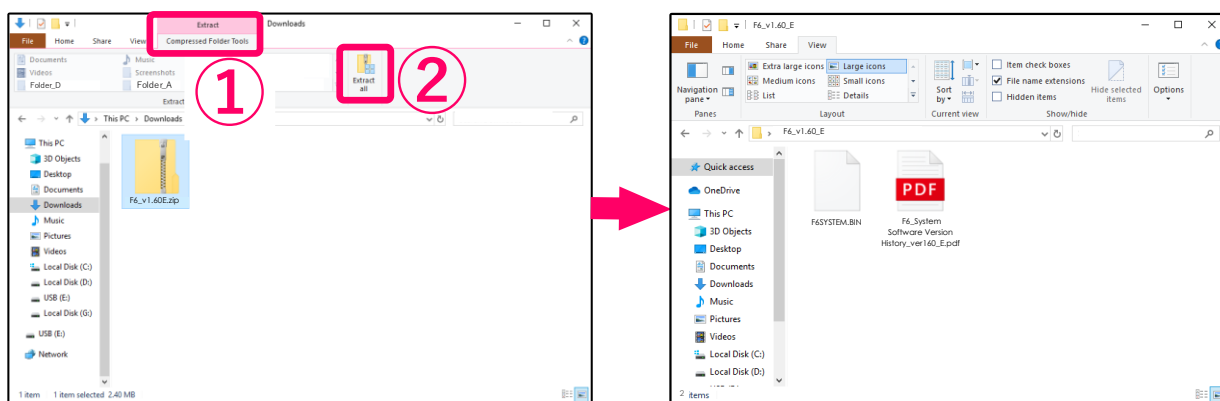


Extracting zip files and copying files to SD cards

■ For Windows

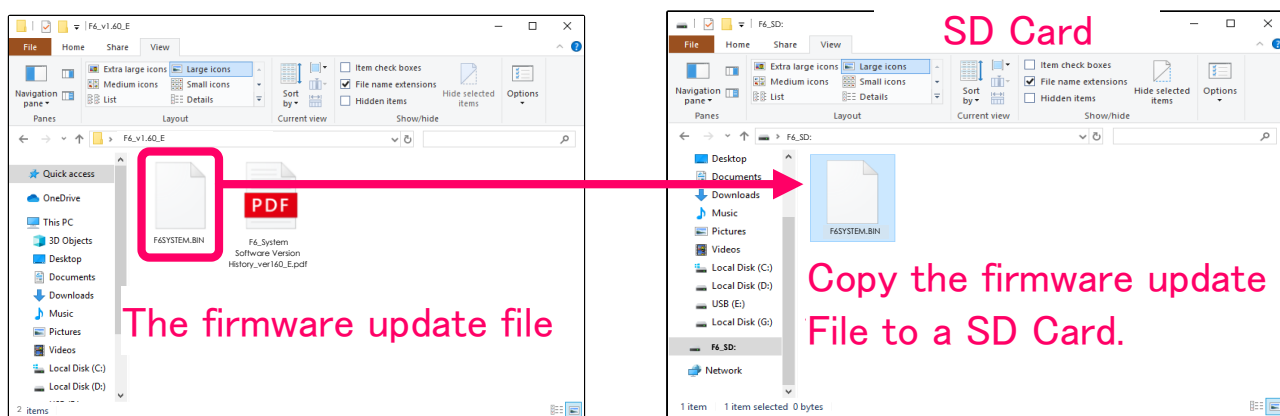
1. Extracting the ZIP file.

Select the folder where you downloaded the ZIP file. ① Click "Compressed Folder Tools", then ② "Extract All". The ZIP file will be extracted.



2. Copying the firmware update file to a SD card.

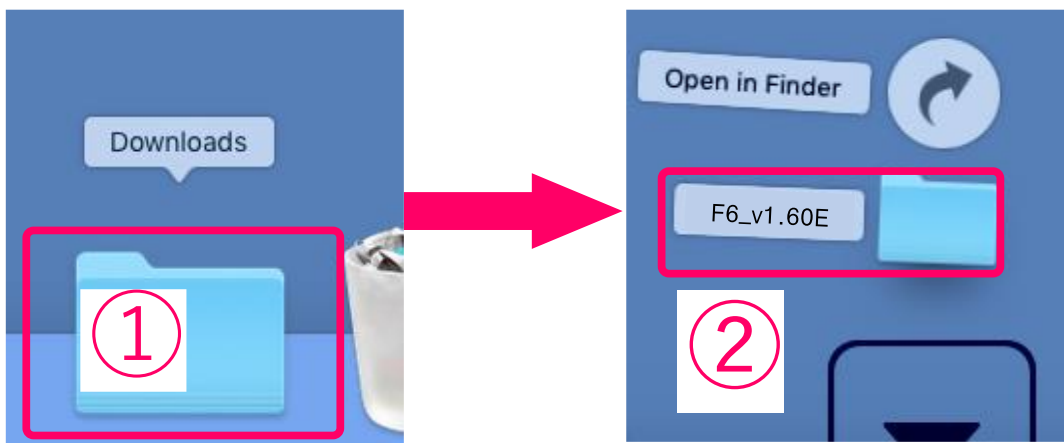
Copy the "F6SYSTEM.BIN" file to the root directory on a SD card.



■ For Mac

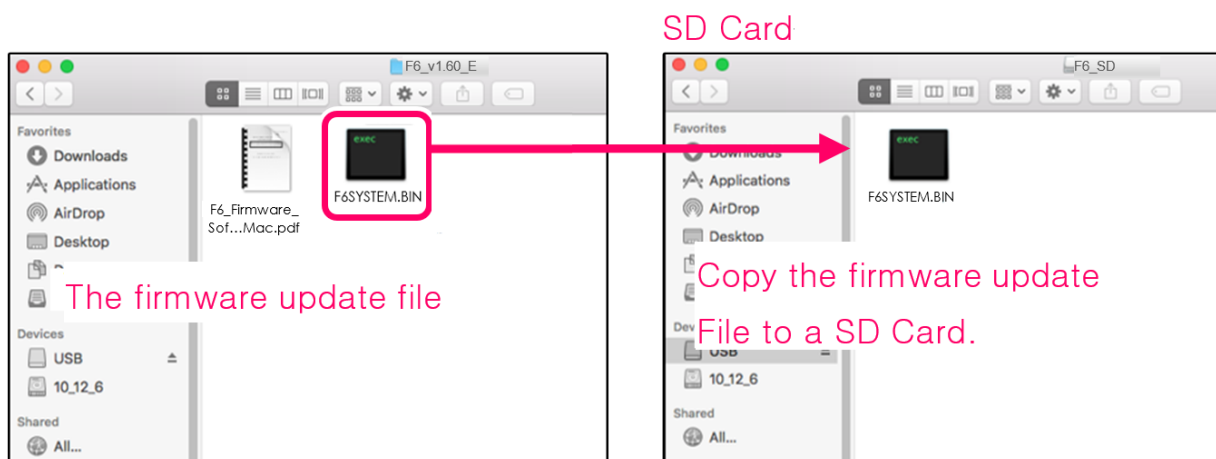
1. Opening the downloaded file.

After downloading, click "Downloads" displayed at the bottom of the screen. Then click ② to open the downloaded file.



2. Copying the firmware update file to a SD card.

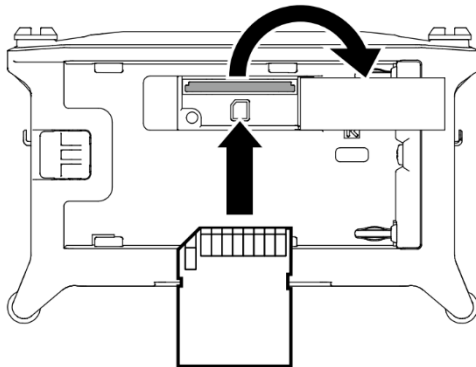
Copy the "F6SYSTEM.BIN" file to the root directory on a SD card.



Update the firmware

The following is the same procedure for Windows and Mac.

1. Insert the SD card into the F6.

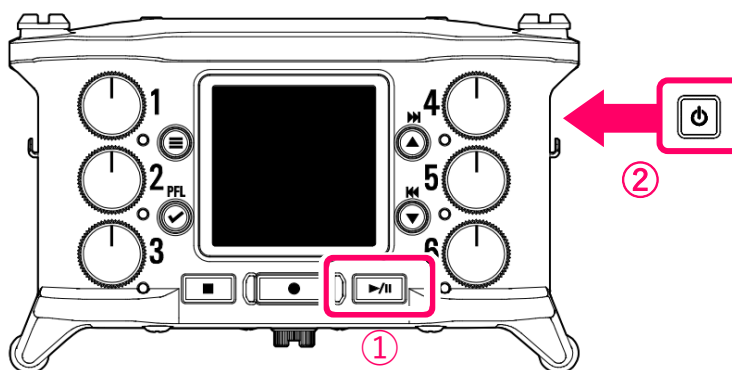


NOTE

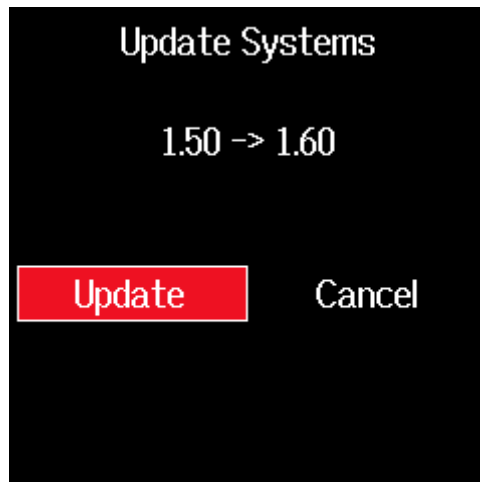
- Always make certain that the power is off when inserting or removing a SD card. Inserting or removing a card while the power is on could result in data loss.
- When inserting a SD card, be sure to insert the correct end with the top side up as shown.

2. Install new batteries in the F6 or connect an AC adapter.

3. While pressing , turn the power on.



4. Use  and  to select Update, and press .

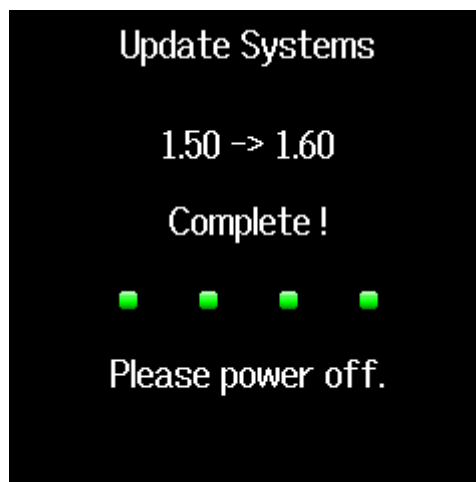


This starts the firmware update.

NOTE

- During the firmware update, do not turn the power off or remove the SD card. Doing so could cause the F6 to become unstartable.
- In the unlikely event that a firmware update should fail, conduct the procedures from the beginning to update the firmware again.

5. After the firmware update completes, turn the power off.

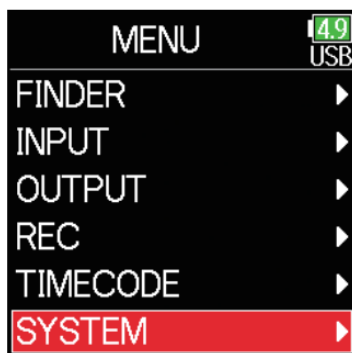


Checking the firmware version

Check the firmware version.

1. Press .

2. Use  and  to select “SYSTEM” and press .



3. Use  and  to select “Firmware Version” and press .

