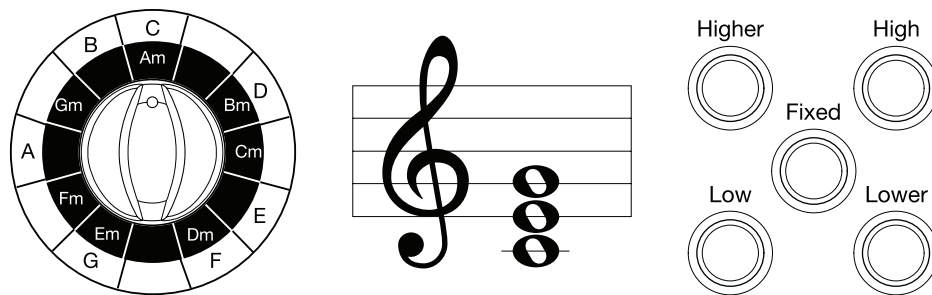


As an example of the V6 harmony structure, following is chart for C Major and A Minor. In order to avoid any unresolved Major 7th harmonies, the V6 modifies chords that contain the 7th tone of the major scales. Therefore for C Major, the 3rd note (E) harmony interval is modified to create a first inversion chord of the tonic (C). Additionally, the 5th note (G) is voiced to present a power 5 chord (G + D without the B), with a suspended 4th (C).



MAJOR KEYS					
Harmony Notes					
Key	Note Sung	Higher	High	Low	Lower
C Major	C	G	E	G	E
C Major	D	A	F	A	F
C Major	E	C	G	C	G
C Major	F	C	A	C	A
C Major	G	D	C	D	C
C Major	A	E	C	E	C
C Major	B	F	D	F	D

MINOR KEYS					
Harmony Notes					
Key	Note Sung	Higher	High	Low	Lower
A Minor	A	E	C	E	C
A Minor	B	F	D	F	D
A Minor	C	G	E	G	E
A Minor	D	A	F	A	F
A Minor	E	C	G	C	G
A Minor	F	C	A	C	A
A Minor	G	D	C	D	C

