

# MS-100BT v1.30 Firmware Update Guide

## For Windows

Copyright(C) 2013 ZOOM Corporation. All Rights Reserved.

Ver. 1.30

● ZOOM Corporation will bear no responsibility for losses or claims from third parties that result from the use of this software. Moreover, without our permission, distributing, selling, leasing, renting, altering and reverse engineering of this software are prohibited. Furthermore, the specifications of this software and the contents of this document could be changed without notice in the future.

Microsoft, Windows, Windows Vista are trademarks or registered trademarks of Microsoft® Corporation. Other product names, registered trademarks and company names are properties of their respective owners.

Bluetooth is registered trademarks of Bluetooth SIG, Inc. and are used under license by ZOOM Corporation.

Note: All trademarks and registered trademarks in this document are used only for identification. There is no intention to infringe on the copyrights of their owners.

The explanatory illustrations in this manual might differ in appearance from screens on the actual unit.

### 1. Supported operating systems

Windows XP SP3 or later (32-bit)

Windows Vista SP1 or later (32-bit, 64-bit)

Windows 7 (32-bit, 64-bit)

Windows 8 (32bit, 64bit)

Before using this application:

**1) Log in to your PC using an account with administrator privileges.**

2) Before launching this application, close all other running applications.

## 2. Introduction

Thank you for downloading the “ZOOM MS-100BT System v1.30 Updater” application.  
This document explains how to update the MS-100BT firmware.

## 3. Checking the MS-100BT firmware versions

Following the procedures on page 25 of the MS-100BT operation manual, check the firmware versions of your MS-100BT. If the SYSTEM version is v1.30 or higher, you do not need to use this application to update the firmware. If the system version is lower than v1.30, follow the procedures below to update the firmware.

## 4. Connect the MS-100BT with the PC via Bluetooth.

Confirm that you can pair the MS-100BT with the computer that you are using.

### NOTE

To connect the MS-100BT with a computer using Bluetooth, it must have a Bluetooth adapter that supports Serial Port Profile (SPP) as a compatible profile.

If the computer that you are using does not have such a Bluetooth adapter built-in, prepare an adapter that supports SPP.

### NOTE

Depending on the Bluetooth adapter used, the update might not occur properly. If this happens, try the following.

- (1) Uninstall the Bluetooth utility software (driver).
- (2) Restart the computer.
- (3) Follow the instructions in the firmware update guide, and conduct the update.

- 4.1. Press parameter knob 1 on the MS-100BT to open the **MENU**.

- 4.2. Select **Bluetooth** in the **MENU** and select **PAIRING**. Then, use the computer to pair the MS-100BT as a Bluetooth device. It might appear as a “Bluetooth headset” on the computer, but this is not a problem.

#### NOTE

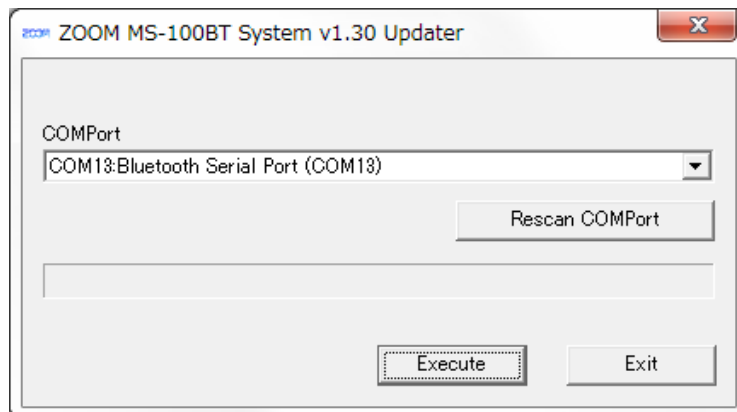
The pairing procedures on the computer depend on the Bluetooth adapter used. See the instructions for that Bluetooth adapter for details.

## 5. Updating the firmware

Before updating the firmware, if any other devices are connected by Bluetooth to the computer you are using, disconnect them all. In addition, if any applications are running, quit them all.

- 5.1. Turn the MS-100BT on and connect it with the computer by Bluetooth.
- 5.2. Double-click the “ZOOM MS-100BT System v1.30 Updater” icon for the firmware updating application to launch it.

After launching, a window that looks like this appears.



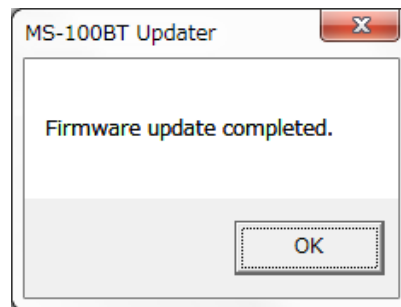
- 5.3. Click the “COMPort” field and select the correct port from the list.  
The correct port depends on the Bluetooth adapter. Check, for example, the “Ports (COM & LPT)” in “Device Manager” or “Bluetooth Settings” to confirm the correct selection.

- 5.4. Click the **Execute** button to start the firmware update. A progress bar shows the status of the firmware update.

The firmware update execution screen appears on the MS-100BT display.

Do not interrupt the power to the MS-100BT while the firmware is being updated.

- 5.5. When the firmware update completes, the following will be shown. Quit the firmware update application.



- 5.6. After "Complete!" appears on the MS-100BT's display, turn it off. Turn the MS-100BT on again and confirm that the SYSTEM version is now v1.30.

#### NOTE

If updating the firmware should fail for any reason, the MS-100BT will still be ready for a firmware update when it is restarted. Updating the firmware at this time is also possible.

This completes the firmware update.