

Handy Guitar Lab for G11

Version 1.2

Operation Manual



This document cannot be displayed properly on black-and-white displays.

Contents

Introduction	3
Copyrights	3
Installing Handy Guitar Lab for G11	3
Connecting to the G11	4
Importing IRs	5

Introduction

Handy Guitar Lab for G11 is a remote control application specifically designed for the ZOOM G11 Multi-Effects Processor. Whether you are creating and editing patch memories, managing banks and patch memories or adjusting the system settings, this app allows you to operate an G11 from an iPhone. This manual does not explain the operation of G11. See the G11 Operation Manual for detailed information about all its functions.

Copyrights

iPhone is a trademark of Apple Inc., registered in the U.S. and other countries. iOS is a trademark or registered trademark of Cisco in the U.S. and other countries and is used under license. App Store is a service mark of Apple Inc. The Bluetooth® word mark and logo are registered trademarks of Bluetooth SIG, Inc. and these marks are used under license by Zoom Corporation. Other trademarks and trade names are the property of their respective companies. All trademarks and registered trademarks in this document are for identification purposes only and are not intended to infringe on the copyrights of their respective owners.

Installing Handy Guitar Lab for G11

1. Open the App Store on the iPhone and search for "Handy Guitar Lab for G11".

2. Tap "GET" on the Handy Guitar Lab for G11 screen.
This will install Handy Guitar Lab for G11 on the device.



NOTE

- When you launch Handy Guitar Lab for G11, you must connect it to the G11 so that it will operate

(→ "Connecting to the G11" on page 4).

Connecting to the G11

NOTE

- A separate ZOOM BTA-1 Bluetooth adapter must be installed in the G11 to remotely control it from an iPhone. With a BTA-1, transmission up to 10 m is possible when used indoors without obstacles.



1. Turn on the G11.

2. Tap the Handy Guitar Lab for G11 app icon.
Handy Guitar Lab for G11 will launch.



3. The Bluetooth MIDI Devices List will appear when it is launched.
To open the Bluetooth Device list tap the G11 button in the toolbar.

A: DIRECT 1 - 001KramRock



4. Tap the Device Name/ID to connect.

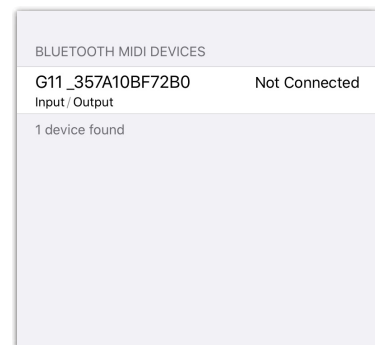
The G11 icon in the tool bar changes to blue when the app is connected to the G11 .



Not connected



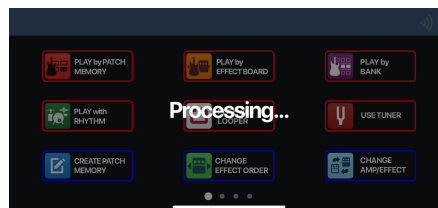
Connected



5. The G11 and Handy Guitar Lab for G11 will briefly sync up.



G11



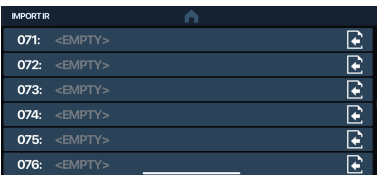
Handy Guitar Lab for G11

NOTE

- If connection is not successful, move the iPhone closer to the G11 or move both to a place where nothing interferes with radio waves and try connecting again. Confirm also that the Bluetooth function of the iPhone can be used.

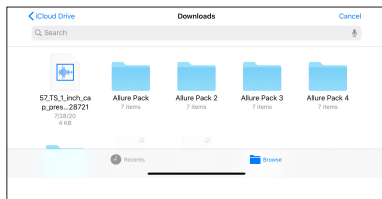
Importing IRs

Importing IRs from Handy Guitar Lab for G11 allows you to quickly access IRs from locations on your iOS device like Dropbox, iCloud or the local file system.



1. Tap  to open the IMPORT IR Screen.


2. Tap  on the slot where you would like to import the IR.



3. Use the browser to locate the IR on your device. Select the IR .

4. The EDIT IR NAME screen will appear .





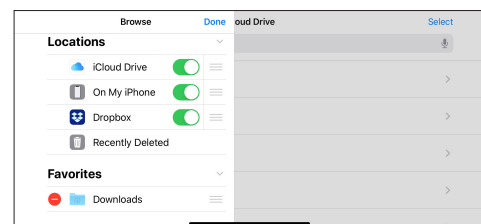
5. Tap the  to show/hide the keyboard . Edit the name.

6. Tap OK. The IR will be transferred to the device.

NOTE

To edit the locations that appear in the IMPORT IR browser:

1. In iOS, open the Files app 
2. Tap  then select Edit from the pop up.
3. Tap the slider to select the locations.
4. Tap "Done."





ZOOM CORPORATION

4-4-3 Kanda-surugadai, Chiyoda-ku, Tokyo 101-0062 Japan
zoomcorp.com

Z2I-4133-03