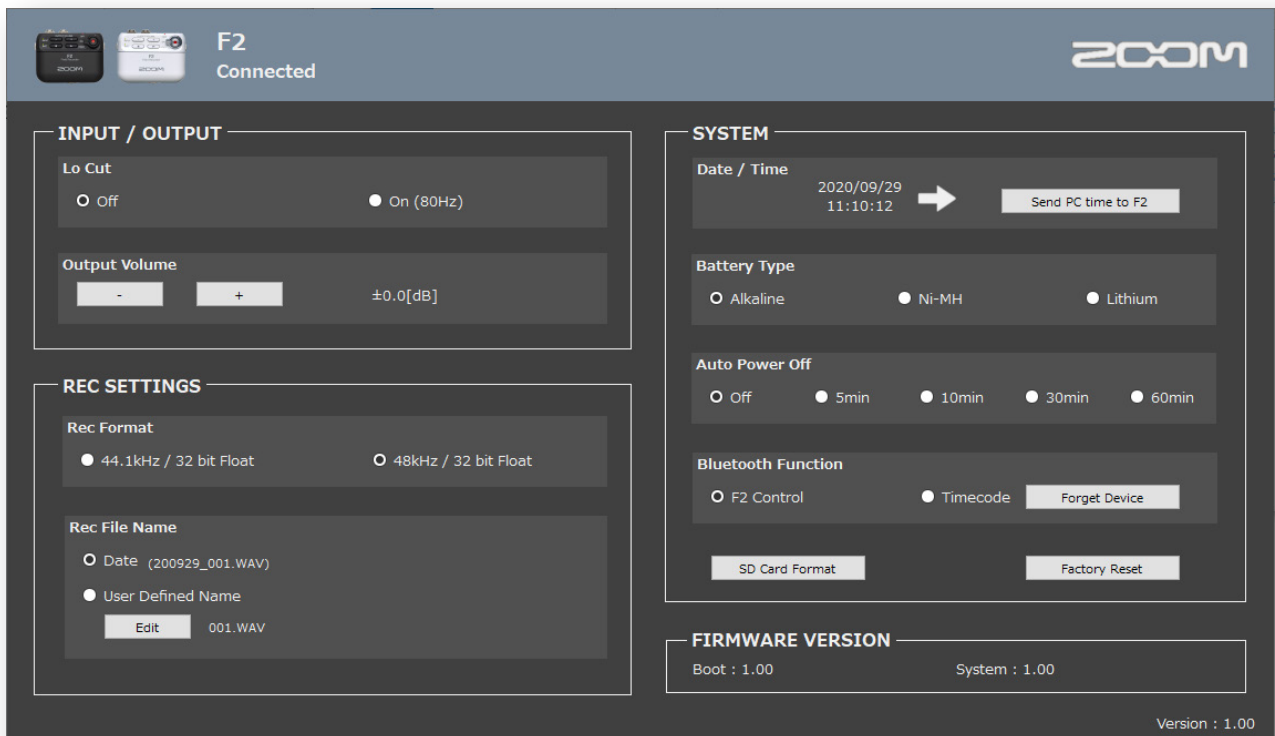


F2 Editor

Version 1.0

Operation Manual



Introduction

F2 Editor can be used to change ZOOM F2/F2-BT settings.

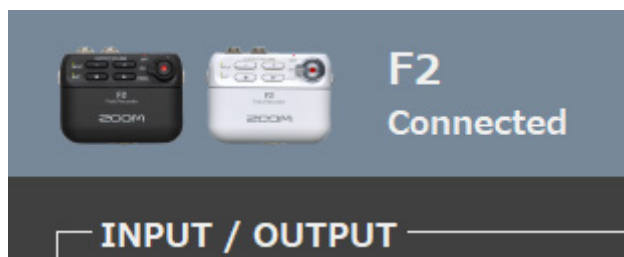
Copyrights

The Bluetooth® word mark and logo are registered trademarks of Bluetooth SIG, Inc., and these marks are used under license by Zoom Corporation.

Other product names, registered trademarks and company names in this document are the property of their respective companies. All trademarks and registered trademarks in this document are for identification purposes only and are not intended to infringe on the copyrights of their respective owners.

Making preparations

- 1. Download F2 Editor to the computer.**
This can be downloaded from the ZOOM website (zoomcorp.com).
- 2. Turn the F2/F2-BT power on.**
- 3. Use a USB cable to connect the F2/F2-BT and the computer.**
- 4. Launch F2 Editor, and confirm that “Connected” appears.**

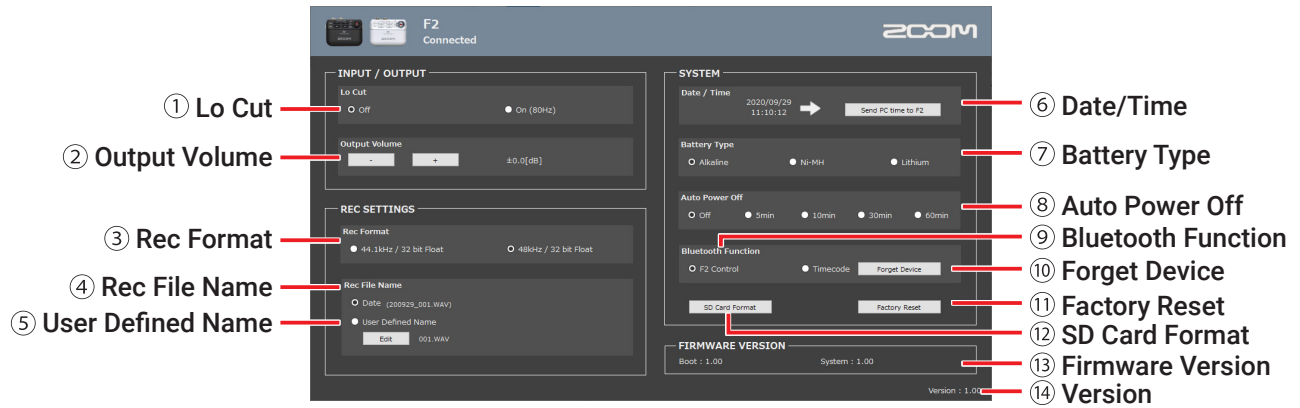


- 5. Change F2/F2-BT settings.**

NOTE

- Connection with a computer is not possible during recording or playback. Moreover, recording and playback are not possible while connected to a computer.
- Connection with F2 Control is not possible when connected to a computer. Moreover, if the F2/F2-BT is connected to F2 Control, connecting it to a computer will end connection with the app.

Screen overview



① Lo Cut	Use these to set the low-cut function.
② Output Volume	Use these to adjust the output volume.
③ Rec Format	Use these to select the recording format.
④ Rec File Name	Use these to set the file name used for recorded files.
⑤ User Defined Name	Use this to edit the text used for file names.
⑥ Date/Time	Use this to set the date and time added to recording files.
⑦ Battery Type	Use these to select the type of battery used by the F2/F2-BT.
⑧ Auto Power Off	Use these to set the time until the F2/F2-BT power turns off automatically.
⑨ Bluetooth Function	Use these to select the enabled Bluetooth function (F2-BT only). Note: The F2-BT can receive wireless timecode from an UltraSync BLUE (made by Timecode Systems) and write this to recording files. Using timecode makes synchronizing audio and video easier when editing. Select Timecode when connecting an UltraSync BLUE.
⑩ Forget Device	Use this to remove pairing with an UltraSync BLUE (F2-BT only).
⑪ Factory Reset	Use this to restore the F2/F2-BT to its factory default settings.
⑫ SD Card Format	Use this to format microSD cards for use with the F2/F2-BT.
⑬ Firmware Version	This shows the versions used by the F2/F2-BT recorder.
⑭ Version	This shows the F2 Editor app version.



ZOOM CORPORATION

4-4-3 Kanda-surugadai, Chiyoda-ku, Tokyo 101-0062 Japan
zoomcorp.com