

F1 Firmware Update Guide

Copyright(C) 2018 ZOOM Corporation. All Rights Reserved.

●Zoom Corporation does not bear liability for any damages or third-party claims arising from the use of the software, whether directly or indirectly. Unauthorized redistribution, sale, leasing, renting, alteration, or reverse engineering of the software is prohibited. Features and specifications of the software and the contents of the documentation may be changed in future without notice.


The illustrations in these instructions might differ from actual screens.

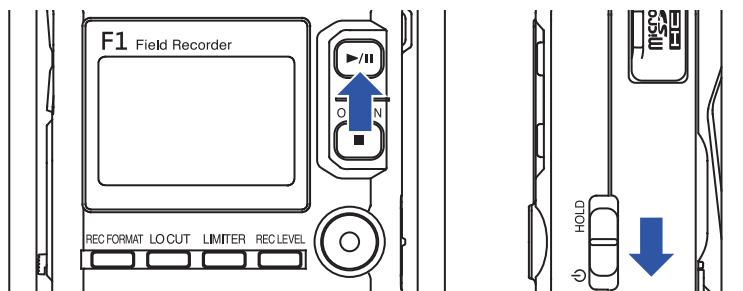
Updating the firmware


1. Install new batteries in the **F1** or connect the dedicated AC adapter.

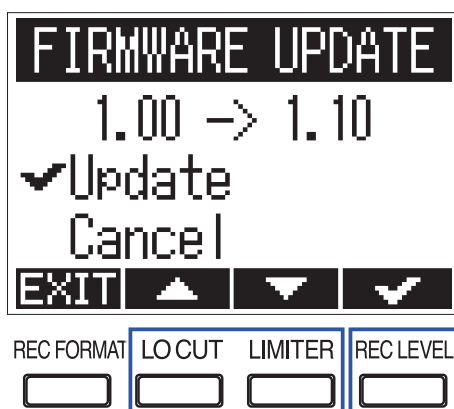
NOTE

Executing a firmware update is not possible if the remaining battery power is low.

2. Copy the firmware update file to the root directory on a microSD card.
3. Insert the microSD card into the **F1**.
4. While pressing , turn the power on.



5. Use  and  to select "Update", and press .



NOTE

During the firmware update, do not turn the power off or remove the microSD card. Doing so could cause the **F1** to become unstartable.

6. After the firmware update completes, turn the power off.

